



Medical Application Manual

Medical Basin & Shower Unit Series

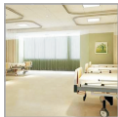
www.akrilika.com



Features & Benefits / 02



Public Space Series / 03—04



Patient Room Series / 05—08



Dental Office Series / 09—11



Doctors and Nurses' Station Series / 12—16



Neonatal and Pediatric Series / 17—25



Labs and Testing Area Series / 26—28



Shower Unit Series / 29



AKRILIKA®, a worldwide brand of 100% acrylic solid surface and various ready-made acrylic products.

AKRILIKA® has devoted itself to the development, production and sales of solid surface products throughout the world. Our newest production facility in China with multiple automatic casting lines and the a group of the industry's most experienced workers, has developed innovative technologies for the production of wide sheet materials, textured wall panels, thermoforming innovations, internationally-inspired shaped products and unmatched manufacturing expertise.

Our vision is to be the world's leading surfacing innovator, exceeding our customers' expectations in quality, delivery and service through continuous improvement and innovation.

With our partners throughout the world we believe that AKRILIKA® can lead a new emergence of solid surfacing as the architects' and designers' product of choice for enlightened commercial, residential and healthcare projects.

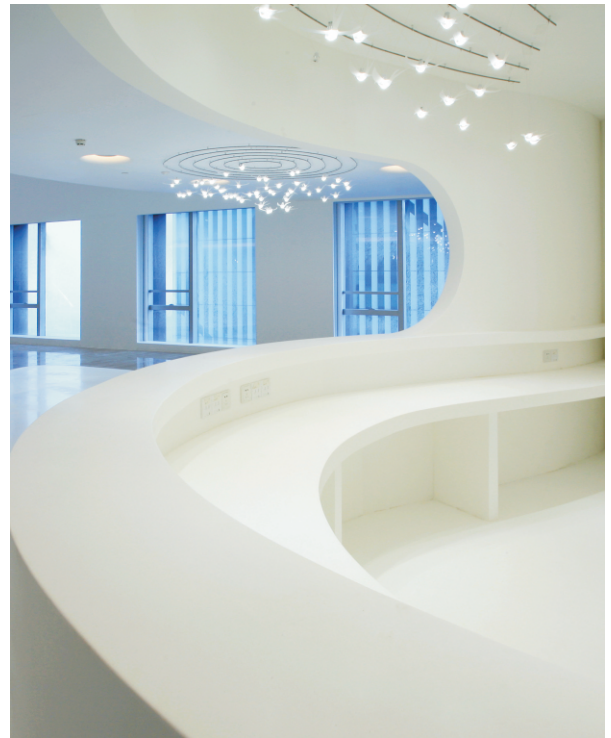


Features & Benefits

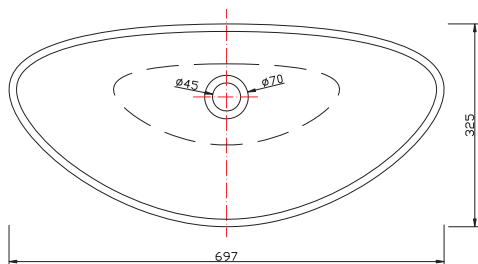
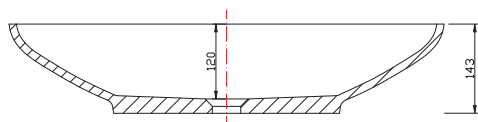
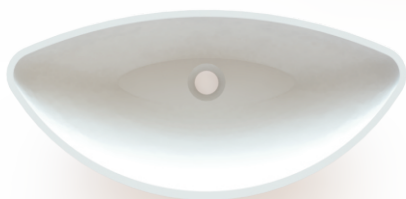
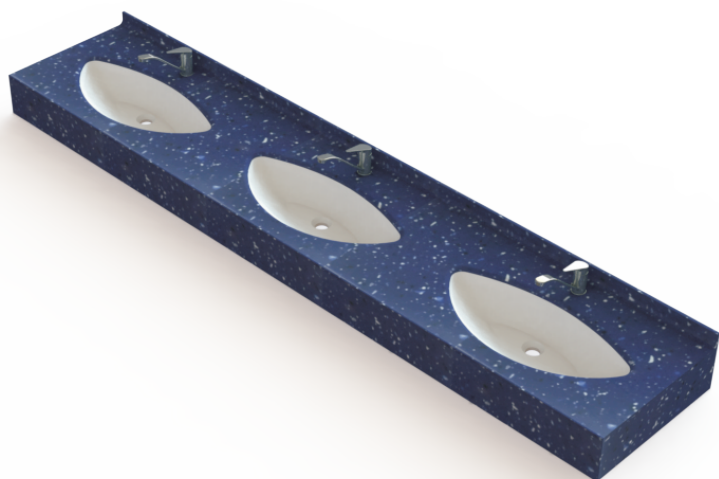
The unique structure of solid surface makes it an ideal choice in a wide variety of healthcare settings. Not only do they look beautiful, they're nonporous and do not support microbial growth when cleaned properly. Solid surface is low-maintenance, durable and easy to decontaminate - key performance qualities that help ensure surfaces retain their value over time.



AKRILIKA shape products are casted by mould thus dimensional accuracy can be ensured and it's flexible for mass production.



- Efficient
- Easy to clean
- Easy to maintain
- Maximum Versatility
- Minimal Seams
- Ergonomic Shapes
- Superior Durability
- Infection Control
- Low Maintenance



RLA200

Medical Public Space Series

Undermount Oval Sink

AKRILIKA® medical sinks can incorporate into any countertop designs

The Sink RLA200 is an undermount sink designed to be seamlessly integrated into a solid surface counter, but can also be mounted under any counter top. It features fully covered construction. This sink can be used in ADA compatible millwork.

DIMENSIONS

L697mm x W325mm x H143mm

MATERIAL

AKRILIKA® 100% pure acrylic sinks. Minor cuts or scratches can easily be removed. Due to the structure of solid surface sinks resist stains, are easy to clean and are simple to renew.

COLORS

See AKRILIKA's color guide for suggested easy to use colors. Other colors along with custom colors are available upon request for addition fee.

FINISHES

Standard finish is Matte, Semi-gloss is also available.



RLA343

Medical Public Space Series

Undermount Oval Sink

AKRILIKA® medical sinks can incorporate into any countertop designs

The Sink RLA343 is an undermount sink designed to be seamlessly integrated into a solid surface counter, but can also be mounted under any counter top. It features fully covered construction. This sink can be used in ADA compatible millwork.

DIMENSIONS

L650mmx 546mm x H170mm

MATERIAL

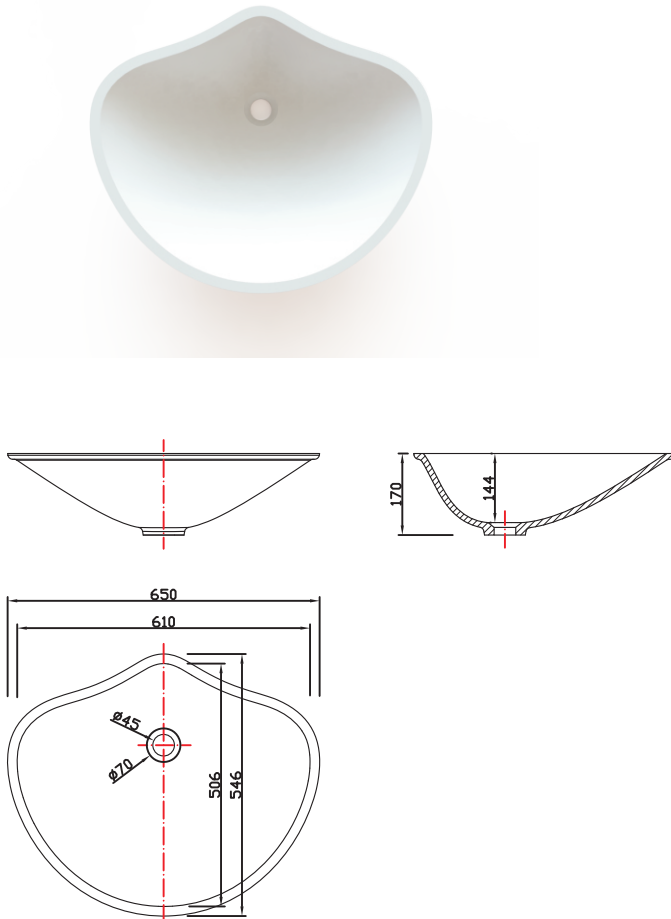
AKRILIKA® 100% pure acrylic sinks. Minor cuts or scratches can easily be removed. Due to the structure of solid surface sinks resist stains, are easy to clean and are simple to renew.

COLORS

See AKRILIKA's color guide for suggested easy to use colors. Other colors along with custom colors are available upon request for addition fee.

FINISHES

Standard finish is Matte, Semi-gloss is also available.





RLA327

Patient Room Series

Undermount Oval Sink

AKRILIKA® medical sinks can incorporate into any countertop designs

The Sink RLA327 is an undermount sink designed to be seamlessly integrated into a solid surface counter, but can also be mounted under any counter top. It features fully covered construction. This sink can be used in ADA compatible millwork.

DIMENSIONS

L560mm x W410mm x H167mm

MATERIAL

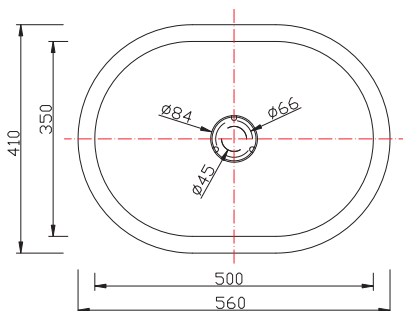
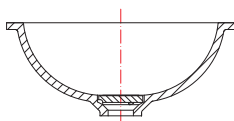
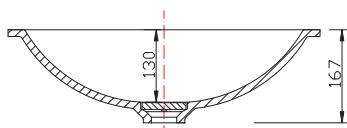
AKRILIKA® 100% pure acrylic sinks. Minor cuts or scratches can easily be removed. Due to the structure of solid surface sinks resist stains, are easy to clean and are simple to renew.

COLORS

See AKRILIKA's color guide for suggested easy to use colors. Other colors along with custom colors are available upon request for addition fee.

FINISHES

Standard finish is Matte, Semi-gloss is also available.





RLA328

Patient Room Series

Undermount Oval Sink

AKRILIKA® medical sinks can incorporate into any countertop designs

The Sink RLA328 is an undermount sink designed to be seamlessly integrated into a solid surface counter, but can also be mounted under any counter top. It features fully coved construction. This sink can be used in ADA compatible millwork.



DIMENSIONS

L550mm x W410mm x H135mm

MATERIAL

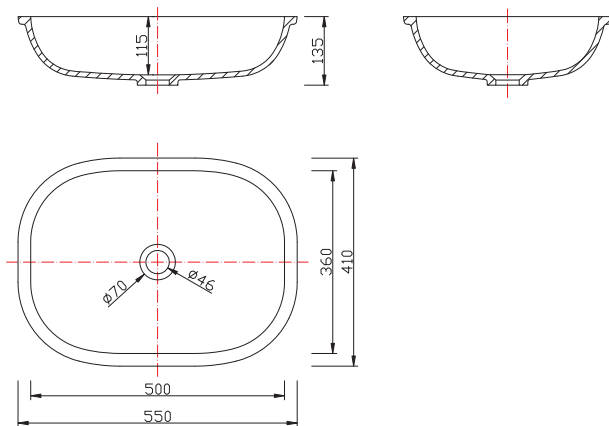
AKRILIKA® 100% pure acrylic sinks. Minor cuts or scratches can easily be removed. Due to the structure of solid surface sinks resist stains, are easy to clean and are simple to renew.

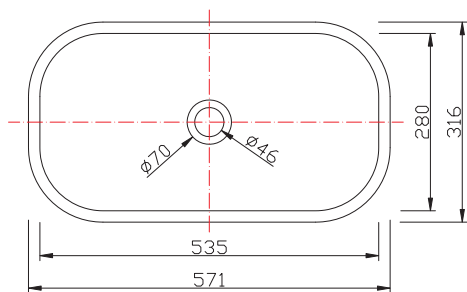
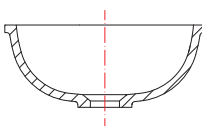
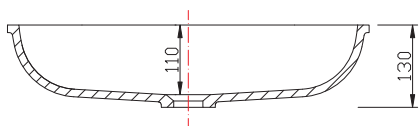
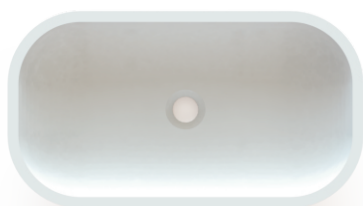
COLORS

See AKRILIKA's color guide for suggested easy to use colors. Other colors along with custom colors are available upon request for addition fee.

FINISHES

Standard finish is Matte, Semi-gloss is also available.





RLA340

Patient Room Series

Undermount Oval Sink

AKRILIKA® medical sinks can incorporate into any countertop designs

The Sink RLA340 is an under mount sink designed to be seamlessly integrated into a solid surface counter, but can also be mounted under any counter top. It features fully coved construction. This sink can be used in ADA compatible millwork.

DIMENSIONS

L571mm x W316mm x H130mm

MATERIAL

AKRILIKA® 100% pure acrylic sinks. Minor cuts or scratches can easily be removed. Due to the structure of solid surface sinks resist stains, are easy to clean and are simple to renew.

COLORS

See AKRILIKA's color guide for suggested easy to use colors. Other colors along with custom colors are available upon request for addition fee.

FINISHES

Standard finish is Matte, Semi-gloss is also available.



RLB350A

Patient Room Series

Undermount Rectangular Sink

AKRILIKA® medical sinks can incorporate into any countertop designs

The Sink RLB350A is an under mount sink designed to be seamlessly integrated into a solid surface counter, but can also be mounted under any counter top. It features fully coved construction. This sink can be used in ADA compatible millwork.



DIMENSIONS

L526mm x W336mm x H167mm

MATERIAL

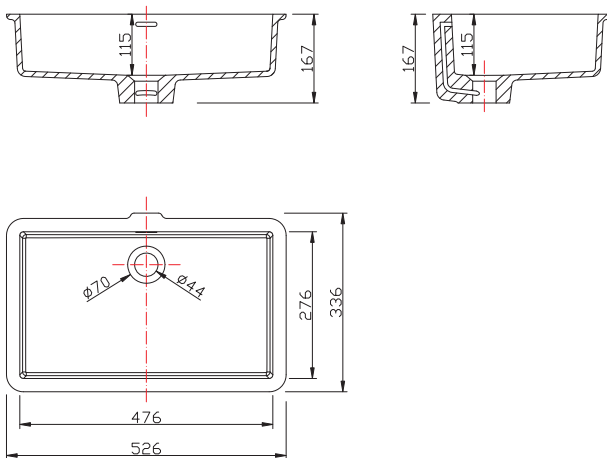
AKRILIKA® 100% pure acrylic sinks. Minor cuts or scratches can easily be removed. Due to the structure of solid surface sinks resist stains, are easy to clean and are simple to renew.

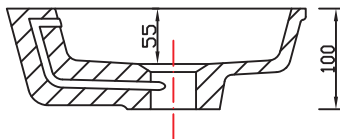
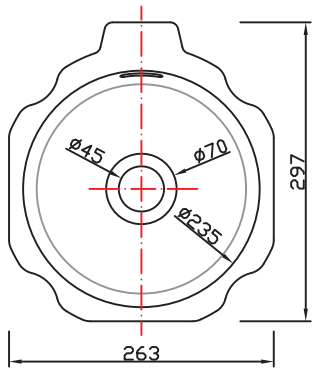
COLORS

See AKRILIKA's color guide for suggested easy to use colors. Other colors along with custom colors are available upon request for addition fee.

FINISHES

Standard finish is Matte, Semi-gloss is also available.





RLA110

Dental Office Series

Undermount Circular Sink

The Sink RLA110 is an undermount sink designed to be seamlessly integrated into a solid surface counter, but can also be mounted under any counter top. It features fully coved construction. This sink can be used in ADA compatible millwork.

DIMENSIONS

L297mm x W263mm x H100mm

MATERIAL

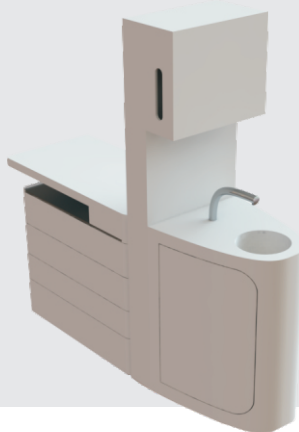
AKRILIKA® 100% pure acrylic sinks. Minor cuts or scratches can easily be removed. Due to the structure of solid surface sinks resist stains, are easy to clean and are simple to renew.

COLORS

See AKRILIKA's color guide for suggested easy to use colors. Other colors along with custom colors are available upon request for addition fee.

FINISHES

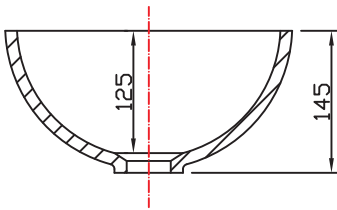
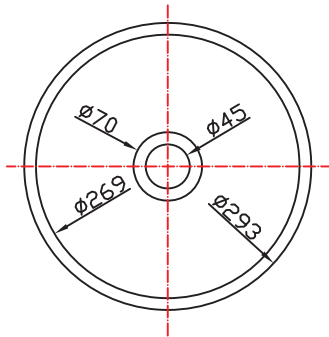
Standard finish is Matte, Semi-gloss is also available.



RLA301

Dental Office Series

Undermount Circular Sink



The Sink RLA303 is an undermount sink designed to be seamlessly integrated into a solid surface counter, but can also be mounted under any counter top. It features fully covered construction. This sink can be used in ADA compatible millwork.

DIMENSIONS

$\phi 293 \times H145\text{mm}$

MATERIAL

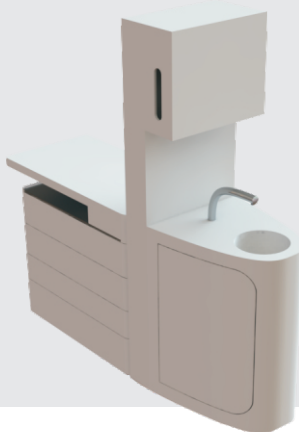
AKRILIKA® 100% pure acrylic sinks. Minor cuts or scratches can easily be removed. Due to the structure of solid surface sinks resist stains, are easy to clean and are simple to renew.

COLORS

See AKRILIKA's color guide for suggested easy to use colors. Other colors along with custom colors are available upon request for addition fee.

FINISHES

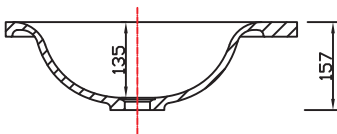
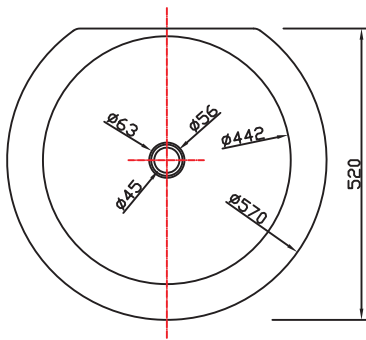
Standard finish is Matte, Semi-gloss is also available.



RLA304

Dental Office Series

Undermount Circular Sink



The Sink RLA304 is an undermount sink designed to be seamlessly integrated into a solid surface counter, but can also be mounted under any counter top. It features fully covered construction. This sink can be used in ADA compatible millwork.

DIMENSIONS

L570mm x W520mm x H157mm

MATERIAL

AKRILIKA® 100% pure acrylic sinks. Minor cuts or scratches can easily be removed. Due to the structure of solid surface sinks resist stains, are easy to clean and are simple to renew.

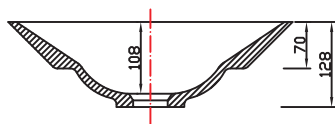
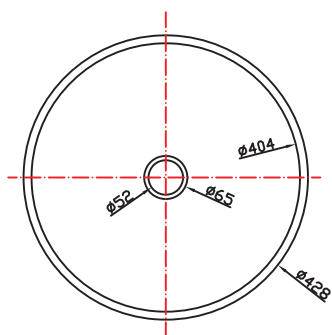
COLORS

See AKRILIKA's color guide for suggested easy to use colors. Other colors along with custom colors are available upon request for addition fee.

FINISHES

Standard finish is Matte, Semi-gloss is also available.





RLA202

Doctors and Nurses' Station Series

Undermount Circular Sink

The Sink RLA202 is an undermount sink designed to be seamlessly integrated into a solid surface counter, but can also be mounted under any counter top. It features fully covered construction. This sink can be used in ADA compatible millwork.

DIMENSIONS

Φ428mm x H128mm

MATERIAL

AKRILIKA® 100% pure acrylic sinks. Minor cuts or scratches can easily be removed. Due to the structure of solid surface sinks resist stains, are easy to clean and are simple to renew.

COLORS

See AKRILIKA's color guide for suggested easy to use colors. Other colors along with custom colors are available upon request for addition fee.

FINISHES

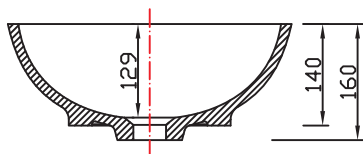
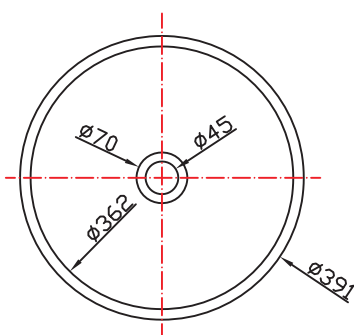
Standard finish is Matte, Semi-gloss is also available.



RLA203

Doctors and Nurses' Station Series

Undermount Circular Sink



The Sink RLA203 is an undermount sink designed to be seamlessly integrated into a solid surface counter, but can also be mounted under any counter top. It features fully covered construction. This sink can be used in ADA compatible millwork.

DIMENSIONS

Φ 391mm x H160mm

MATERIAL

AKRILIKA® 100% pure acrylic sinks. Minor cuts or scratches can easily be removed. Due to the structure of solid surface sinks resist stains, are easy to clean and are simple to renew.

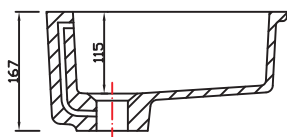
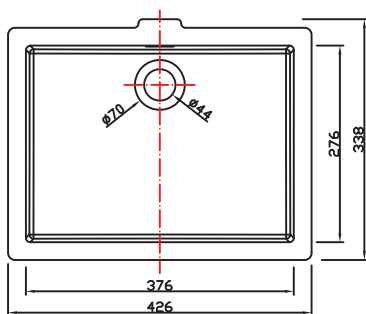
COLORS

See AKRILIKA's color guide for suggested easy to use colors. Other colors along with custom colors are available upon request for addition fee.

FINISHES

Standard finish is Matte, Semi-gloss is also available.





RLB354A

Doctors and Nurses' Station Series

Undermount Rectangular Sink

The Sink RLB354A is an undermount sink designed to be seamlessly integrated into a solid surface counter, but can also be mounted under any counter top. It features fully coved construction. This sink can be used in ADA compatible millwork.

DIMENSIONS

L426mm x W338mm x H167mm

MATERIAL

AKRILIKA® 100% pure acrylic sinks. Minor cuts or scratches can easily be removed. Due to the structure of solid surface sinks resist stains, are easy to clean and are simple to renew.

COLORS

See AKRILIKA's color guide for suggested easy to use colors. Other colors along with custom colors are available upon request for addition fee.

FINISHES

Standard finish is Matte, Semi-gloss is also available.



RLC103

Doctors and Nurses' Station Series

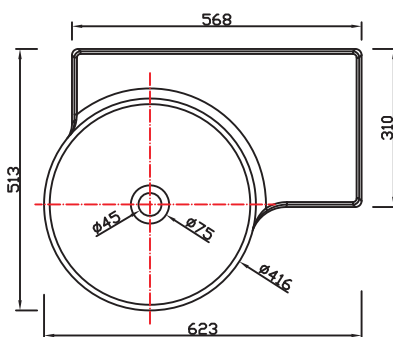
Semi-recessed Circular Sink



The Sink RLA303 is an semi-reseessed sink designed to be seamlessly combined with a solid surface counter, but can also be combined with any counter top. It features fully covered construction. This sink can be used in ADA compatible millwork.

DIMENSIONS

L623mm x W513mm x H125mm

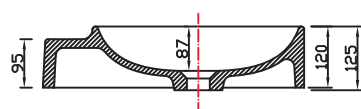


MATERIAL

AKRILIKA® 100% pure acrylic sinks. Minor cuts or scratches can easily be removed. Due to the structure of solid surface sinks resist stains, are easy to clean and are simple to renew.

COLORS

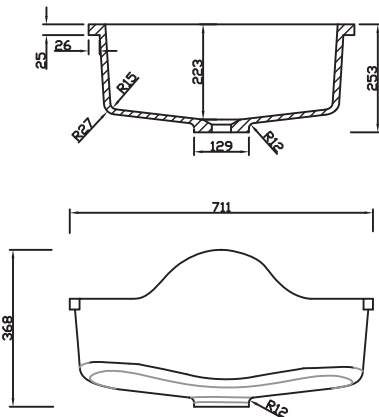
See AKRILIKA's color guide for suggested easy to use colors. Other colors along with custom colors are available upon request for addition fee.



FINISHES

Standard finish is Matte, Semi-gloss is also available.





Doctors and Nurses' Station Series

Undermount Arc Sink

The Sink is an undermount arc sink designed to be seamlessly combined with a solid surface counter, but can also be combined with any counter top. It features fully coved construction. This sink can be used in ADA compatible millwork.

DIMENSIONS

L711mm x W602mm x H368mm

MATERIAL

AKRILIKA® 100% pure acrylic sinks. Minor cuts or scratches can easily be removed. Due to the structure of solid surface sinks resist stains, are easy to clean and are simple to renew.

COLORS

See AKRILIKA's color guide for suggested easy to use colors. Other colors along with custom colors are available upon request for addition fee.

FINISHES

Standard finish is Matte, Semi-gloss is also available.





RLE206

Neonatal and Pediatric Series

Medical Baby bathtub

The medical baby bathtub RLE206 is an under mount bathtub designed to be seamlessly integrated into a solid surface counter, but can also be mounted under any counter top.

DIMENSIONS

L707mm x W451mm x H194mm

MATERIAL

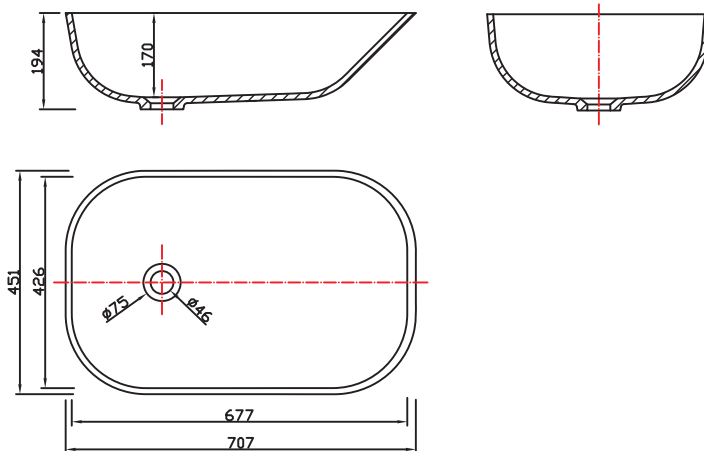
AKRILIKA® 100% pure acrylic bathtub. Minor cuts or scratches can easily be removed. Due to the structure of solid surface bathtub resist stains, are easy to clean and are simple to renew.

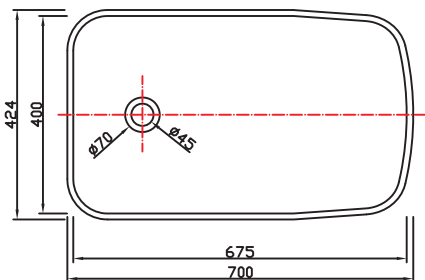
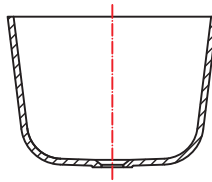
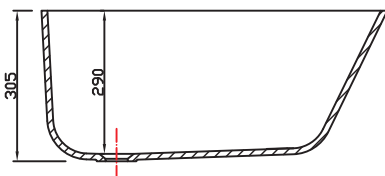
COLORS

See AKRILIKA's color guide for suggested easy to use colors. Other colors along with custom colors are available upon request for addition fee.

FINISHES

Standard finish is Matte, Semi-gloss is also available.





RLE207

Neonatal and Pediatric Series

Medical Baby bathtub

The medical baby bathtub RLE207 is an under mount bathtub designed to be seamlessly integrated into a solid surface counter, but can also be mounted under any counter top.

DIMENSIONS

L700mm x W424mm x H305mm

MATERIAL

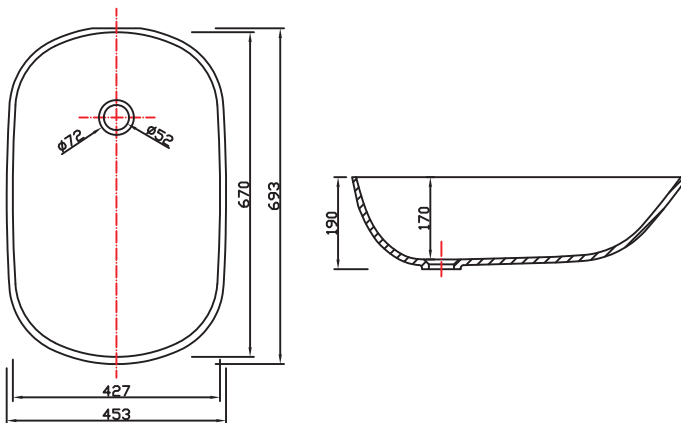
AKRILIKA® 100% pure acrylic bathtub. Minor cuts or scratches can easily be removed. Due to the structure of solid surface bathtub resist stains, are easy to clean and are simple to renew.

COLORS

See AKRILIKA's color guide for suggested easy to use colors. Other colors along with custom colors are available upon request for addition fee.

FINISHES

Standard finish is Matte, Semi-gloss is also available.



RLE213

Neonatal and Pediatric Series

Medical Baby bathtub

The medical baby bathtub RLE213 is an under mount bathtub designed to be seamlessly integrated into a solid surface counter, but can also be mounted under any counter top.

DIMENSIONS

L693mm x W453mm x H190mm

MATERIAL

AKRILIKA® 100% pure acrylic bathtub. Minor cuts or scratches can easily be removed. Due to the structure of solid surface bathtub resist stains, are easy to clean and are simple to renew.

COLORS

See AKRILIKA's color guide for suggested easy to use colors. Other colors along with custom colors are available upon request for addition fee.

FINISHES

Standard finish is Matte, Semi-gloss is also available.



RLE215

Neonatal and Pediatric Series

Medical Baby bathtub

The medical baby bathtub RLE215 is an under mount bathtub designed to be seamlessly integrated into a solid surface counter, but can also be mounted under any counter top.

DIMENSIONS

L700mm x W407mm x H240mm

MATERIAL

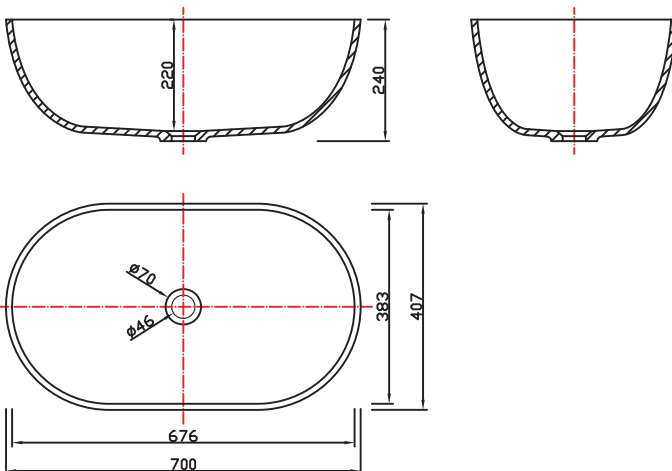
AKRILIKA® 100% pure acrylic bathtub. Minor cuts or scratches can easily be removed. Due to the structure of solid surface bathtub resist stains, are easy to clean and are simple to renew.

COLORS

See AKRILIKA's color guide for suggested easy to use colors. Other colors along with custom colors are available upon request for addition fee.

FINISHES

Standard finish is Matte, Semi-gloss is also available.





RLE216

Neonatal and Pediatric Series

Medical Baby bathtub

The medical baby bathtub RLE216 is an under mount bathtub designed to be seamlessly integrated into a solid surface counter, but can also be mounted under any counter top.

DIMENSIONS

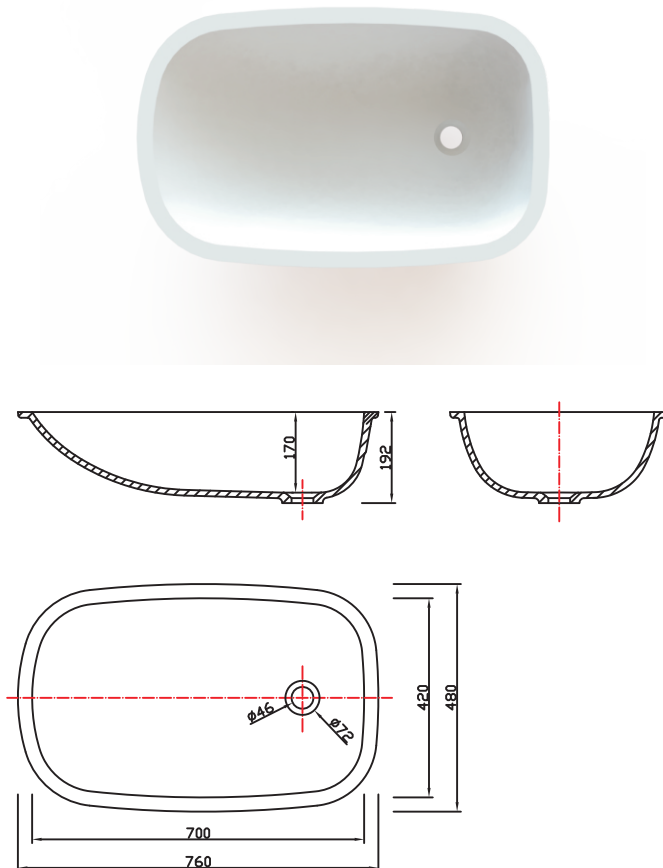
L760mm x W480mm x H192mm

MATERIAL

AKRILIKA® 100% pure acrylic bathtub. Minor cuts or scratches can easily be removed. Due to the structure of solid surface bathtub resist stains, are easy to clean and are simple to renew.

COLORS

See AKRILIKA's color guide for suggested easy to use colors. Other colors along with custom colors are available upon request for addition fee.



FINISHES

Standard finish is Matte, Semi-gloss is also available.



RLA311

Neonatal and Pediatric Series

Medical Baby bathtub

The medical baby bathtub RLA311 is an under mount bathtub designed to be seamlessly integrated into a solid surface counter, but can also be mounted under any counter top.

DIMENSIONS

L590mm x W400mm x H192mm

MATERIAL

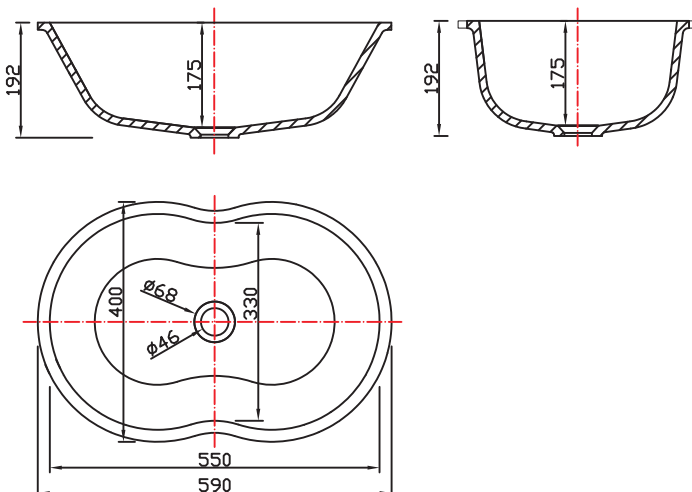
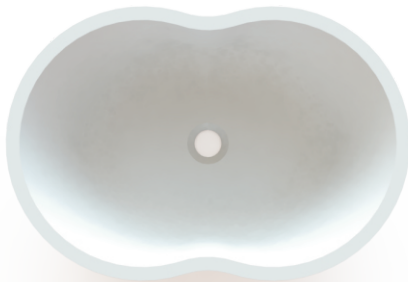
AKRILIKA® 100% pure acrylic bathtub. Minor cuts or scratches can easily be removed. Due to the structure of solid surface bathtub resist stains, are easy to clean and are simple to renew.

COLORS

See AKRILIKA's color guide for suggested easy to use colors. Other colors along with custom colors are available upon request for addition fee.

FINISHES

Standard finish is Matte, Semi-gloss is also available.





RLA312

Neonatal and Pediatric Series

Medical Baby bathtub

The medical baby bathtub RLA312 is an under mount bathtub designed to be seamlessly integrated into a solid surface counter, but can also be mounted under any counter top.

DIMENSIONS

L740mm x W440mm x H267mm

MATERIAL

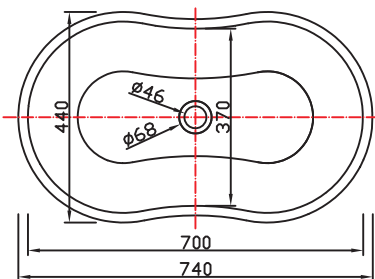
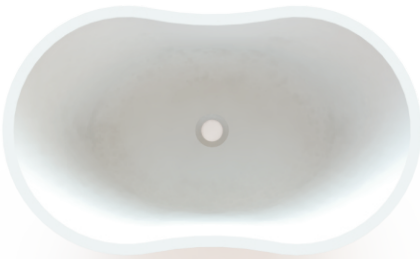
AKRILIKA® 100% pure acrylic bathtub. Minor cuts or scratches can easily be removed. Due to the structure of solid surface bathtub resist stains, are easy to clean and are simple to renew.

COLORS

See AKRILIKA's color guide for suggested easy to use colors. Other colors along with custom colors are available upon request for addition fee.

FINISHES

Standard finish is Matte, Semi-gloss is also available.





RLA313

Neonatal and Pediatric Series

Medical Baby bathtub

The medical baby bathtub RLA313 is an under mount bathtub designed to be seamlessly integrated into a solid surface counter, but can also be mounted under any counter top.

DIMENSIONS

L890mm x W490mm x H267mm

MATERIAL

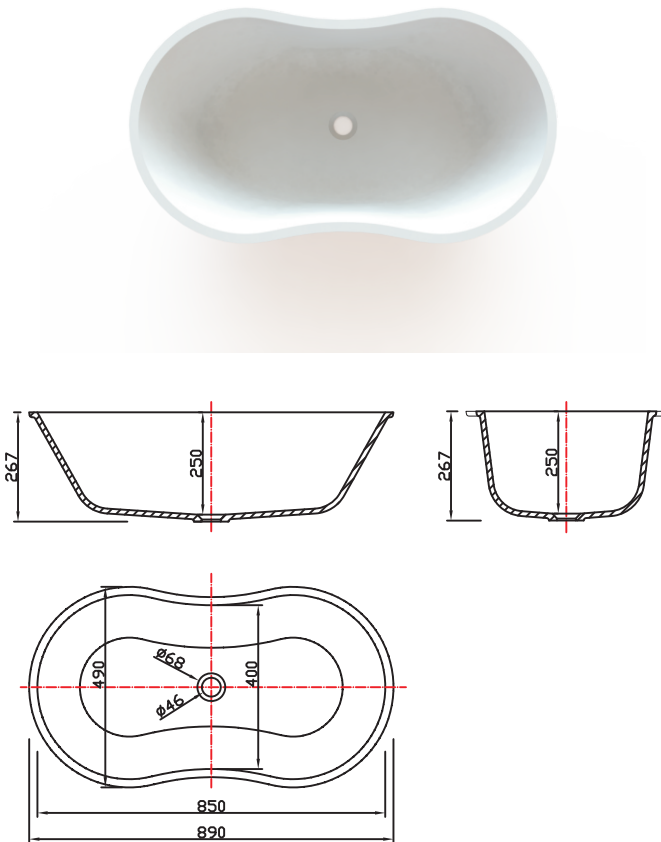
AKRILIKA® 100% pure acrylic bathtub. Minor cuts or scratches can easily be removed. Due to the structure of solid surface bathtub resist stains, are easy to clean and are simple to renew.

COLORS

See AKRILIKA's color guide for suggested easy to use colors. Other colors along with custom colors are available upon request for addition fee.

FINISHES

Standard finish is Matte, Semi-gloss is also available.





RLC121A

Neonatal and Pediatric Series

Medical Baby bathtub

The medical baby bathtub RLC121A is an undermount bathtub designed to be seamlessly integrated into a solid surface counter, but can also be mounted under any counter top.

DIMENSIONS

L711mm x W482mm x H220mm



MATERIAL

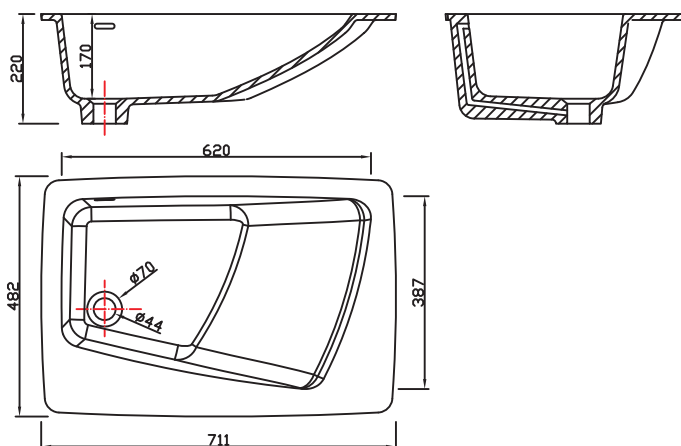
AKRILIKA® 100% pure acrylic bathtub. Minor cuts or scratches can easily be removed. Due to the structure of solid surface bathtub resist stains, are easy to clean and are simple to renew.

COLORS

See AKRILIKA's color guide for suggested easy to use colors. Other colors along with custom colors are available upon request for addition fee.

FINISHES

Standard finish is Matte, Semi-gloss is also available.



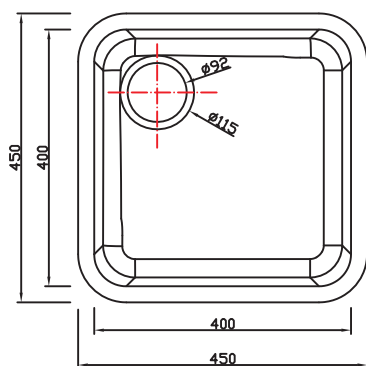


RLD136

Labs and Testing Area Series

Undermount Square Scrub Sink

The Sink RLD136 is an undermount sink designed to be seamlessly integrated into a solid surface counter, but can also be mounted under any counter top. It features fully coved construction. This sink can be used in ADA compatible millwork.



DIMENSIONS

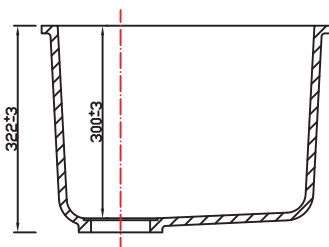
L450mm x W450mm x H322mm

MATERIAL

AKRILIKA® 100% pure acrylic sinks. Minor cuts or scratches can easily be removed. Due to the structure of solid surface sinks resist stains, are easy to clean and are simple to renew.

COLORS

See AKRILIKA's color guide for suggested easy to use colors. Other colors along with custom colors are available upon request for addition fee.



FINISHES

Standard finish is Matte, Semi-gloss is also available.





RLD137

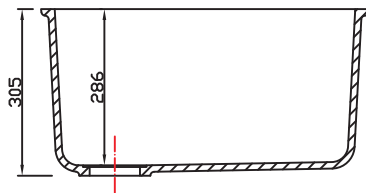
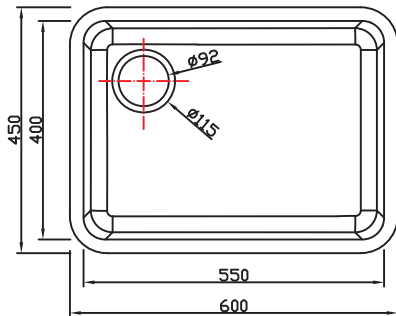
Labs and Testing Area Series

Undermount Rectangular Scrub Sink

The Sink RLD137 is an undermount sink designed to be seamlessly integrated into a solid surface counter, but can also be mounted under any counter top. It features fully coved construction. This sink can be used in ADA compatible millwork.

DIMENSIONS

L600mm x W450mm x H305mm



MATERIAL

AKRILIKA® 100% pure acrylic sinks. Minor cuts or scratches can easily be removed. Due to the structure of solid surface sinks resist stains, are easy to clean and are simple to renew.

COLORS

See AKRILIKA's color guide for suggested easy to use colors. Other colors along with custom colors are available upon request for addition fee.

FINISHES

Standard finish is Matte, Semi-gloss is also available.



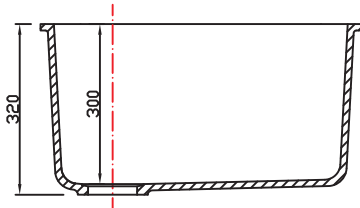
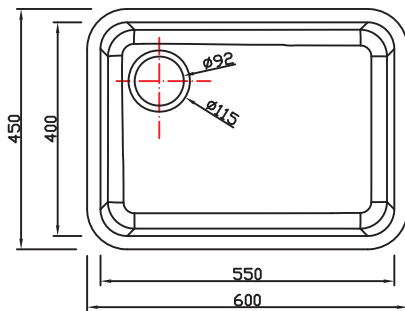


RLD138

Labs and Testing Area Series

Undermount Rectangular Scrub Sink

The Sink RLD138 is an undermount sink designed to be seamlessly integrated into a solid surface counter, but can also be mounted under any counter top. It features fully coved construction. This sink can be used in ADA compatible millwork.



DIMENSIONS

L600mm x W450mm x H320mm

MATERIAL

AKRILIKA® 100% pure acrylic sinks. Minor cuts or scratches can easily be removed. Due to the structure of solid surface sinks resist stains, are easy to clean and are simple to renew.

COLORS

See AKRILIKA's color guide for suggested easy to use colors. Other colors along with custom colors are available upon request for addition fee.

FINISHES

Standard finish is Matte, Semi-gloss is also available.





RLF105

Medical Shower Unit Series

AKRILIKA® created a versatile shower system that designers can incorporate into any design. With a standard line of shower pans, panels, trim and caddy accessories, designers can create projects to enhance their individuality.

DIMENSIONS

L300mm x W300mm x H125mm

MATERIAL

AKRILIKA® 100% pure acrylic shower unit. Minor cuts or scratches can easily be removed. Due to the structure of solid surface shower units resist stains, are easy to clean and are simple to renew.

COLORS

See AKRILIKA's color guide for suggested easy to use colors. Other colors along with custom colors are available upon request for addition fee.

FINISHES

Standard finish is Matte, Semi-gloss is also available.

